

4-H in Crawford, Lafayette & Walworth  
Counties Presents. . .

# "INTO THE LAB"

**WHO:** 6TH-8TH GRADE YOUTH

**WHAT:** 4 SESSION VIRTUAL SCIENCE SERIES,  
EXPLORING. . .

**\*POULTRY SCIENCE      \*GEOLOGY**

**\*NEUROSCIENCE      \*PHYSICS & MICROBIOLOGY**

**COST:** \$10 (DOES NOT INCLUDE FIELDTRIP COST)

PARTICIPANTS WILL RECEIVE ACTIVITY KITS TO USE DURING  
SESSIONS.

A FIELDTRIP TO UW-MADISON WILL CULMINATE THE SERIES!  
DETAILS TO BE ANNOUNCED DURING LAST SESSION.

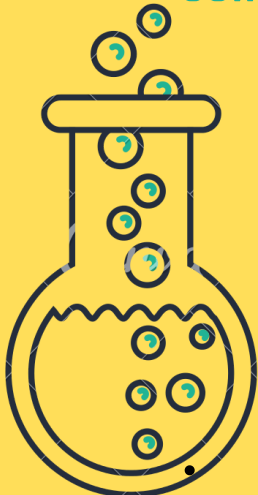
**REGISTER AT: [HTTPS://GO.WISC.EDU/L01804](https://go.wisc.edu/L01804)**

**OR USE THE QR CODE**

**REGISTER BY MARCH 18, 2022**

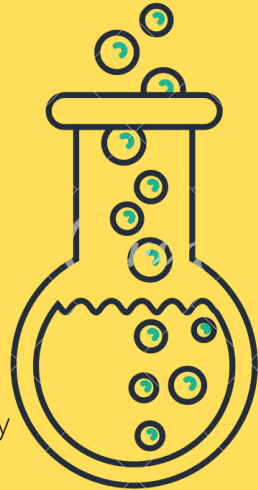


**MARCH 31, APRIL 7, 21, 28 6:00-7:15 PM**  
**JUNE 16 - UW-MADISON CAMPUS**



**Thanks to our partners:**

- \*UW Madison Biotechnology Center
- \*UW Madison - Geology Department
- \*UW Madison - Poultry Science Dept.
- \*UW Madison - Neuroscience Dept.
- \*UW Madison - Physics & Microbiology
- \*Wisconsin State 4-H Foundation



The University of Wisconsin-Madison Division of Extension is an EEO/AA institution  
committed to diversity among its employees and in its programs.