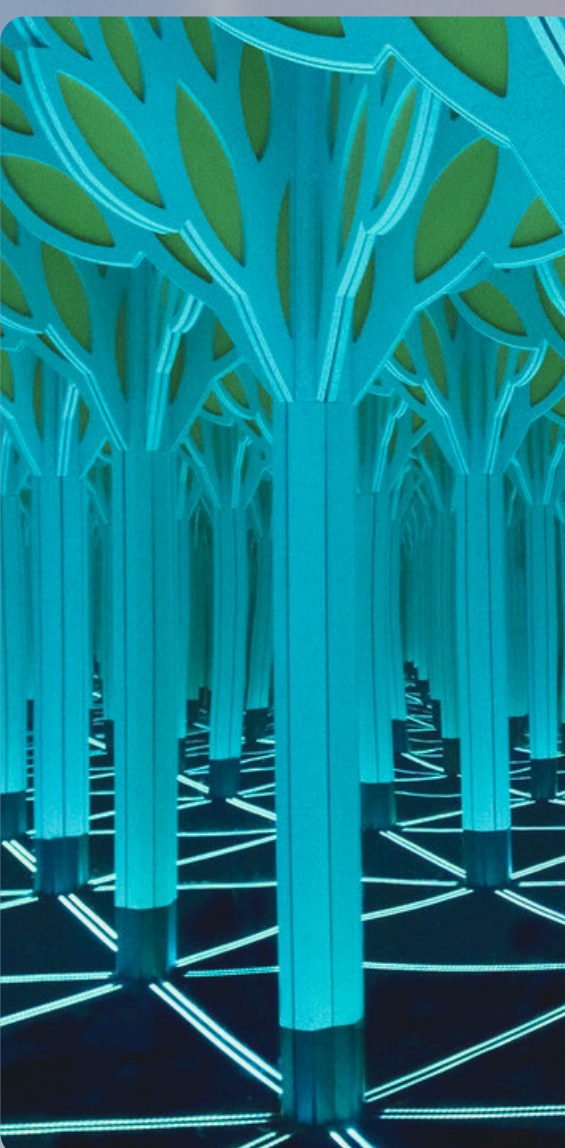


CHICAGO S.T.E.M. *Experience*

July 21-23, 2025

You haven't done S.T.E.M. like THIS before! Join us as we travel coach to the windy city for fast-paced science exploration at a multitude of infamous landmarks. Along the way, we'll have fun with friends, eat delicious food, take in great entertainment, and enjoy hotel lodging. Activities include:

*Museum of Science & Industry * Field Museum
Shedd Aquarium * Adler Planetarium
Willis Tower * Dinner @ Giordano's Pizza
Dinner & Show @ Medieval Times
Walking Tour of the Bean and other attractions*



Open to youth finishing grades 5-8 in 2025



Bus will meet WalCo participants in Janesville, WI (exact location TBA)



**10:15 a.m. 7/21 (check-in)
5:00 p.m. 7/23 (check-out)**



**\$325 for 4-H members
\$400 for non-members**

Fee covers transportation, hotel lodging, most meals, museum admissions, t-shirt, and snacks. Deposit of \$100 by May 30th holds your spot. Balance due June 30. A limited number of partial scholarships are available to 4-Hers based on need. Email deborah.harris@wisc.edu to make a request. Trip is limited to first 15 youth who register and pay the deposit.

**Registration and
deposit deadline:
May 30.**

<https://go.wisc.edu/5t87vk>



UW-MADISON EXTENSION
Walworth County



This program is replacing "4-H Science Explorers--Into the Lab" for 2025.

An EEO/AA employer, University of Wisconsin-Madison Division of Extension provides equal opportunities in employment and programming, including Title VI, Title IX, the Americans with Disabilities Act (ADA) and Section 504 of the Rehabilitation Act requirements.